

Louisville Fire Department

State of the Department

(Presented by Tim Parker, Fire Chief)

"Our Family Serving your Family"

Louisville Fire Department

□ *Fire District - Background*

- Founded in 1978 (Dept. 1871)
 - We are a quasi governmental entity operating under the “Special District” State statute.
 - Oversight by an elected “Board of Directors”
 - 17 sq.miles with approx. 23,000 population.
 - No tax increases since its inception (3.187 mills)
 - No outstanding debt (2006)
-

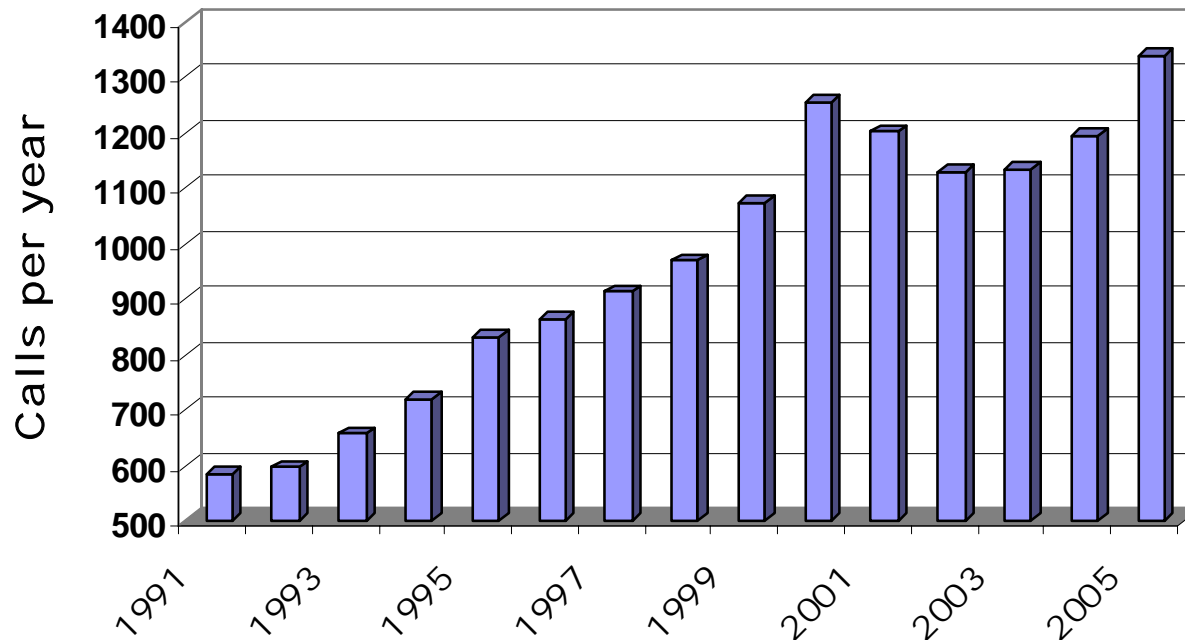
Louisville Fire Department

Fire Department – Profile

- Staffing:
 - Currently 6 FTEs (Administration, Training and Fire prevention personnel).
 - 50 volunteers (Tactical Operations)
 - All personnel are required to be certified Firefighters, EMTs/CPR and Haz-Mat.
 - 1338 emergencies responded to in 2005
 - Equipment inventory includes
 - (2) Engines, (2) Aerials, (1) Rescue and (1) Brush
-

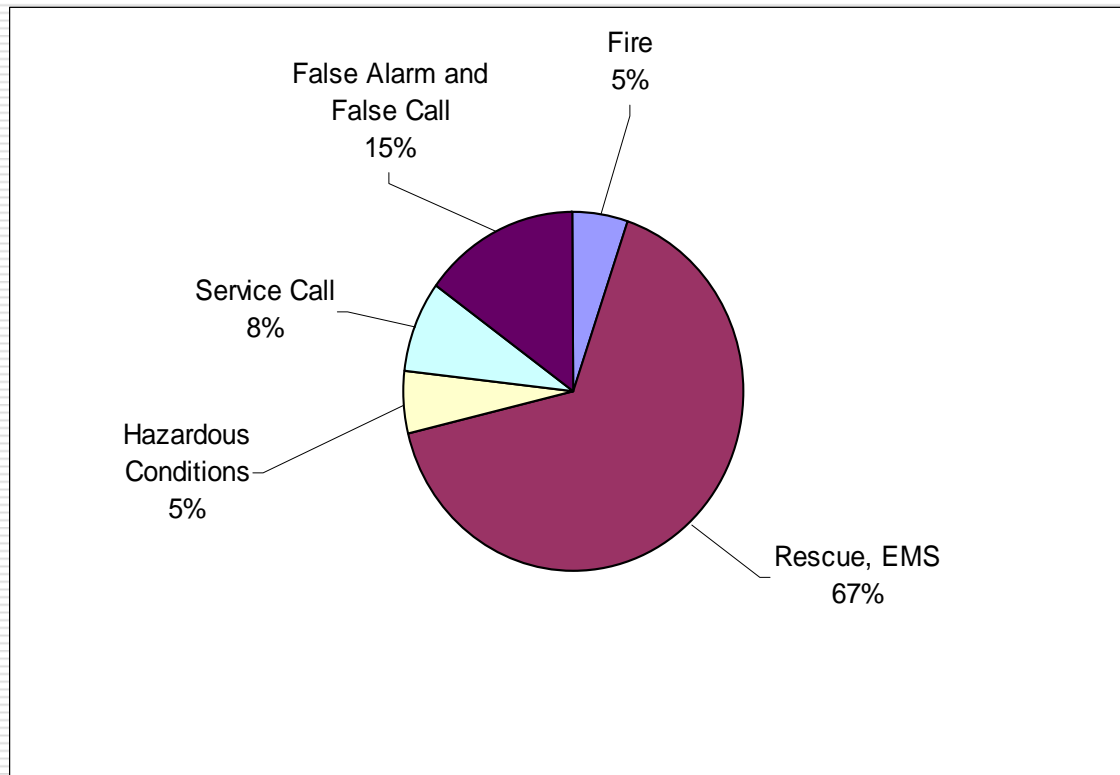
Louisville Fire Department

□ *Fire Department, (Call Load)*



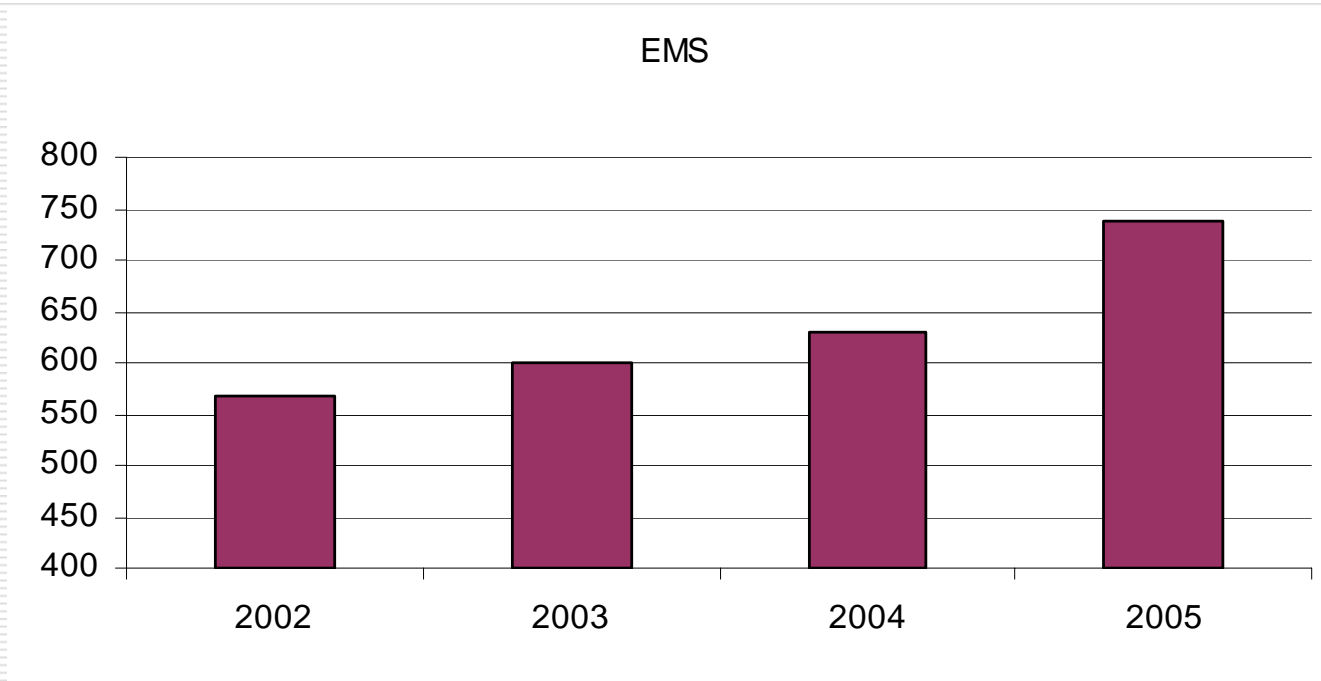
Louisville Fire Department

□ *Fire Department, (Call Load)*



Louisville Fire Department

□ *Fire Department (EMS call load)*



Louisville Fire Department

□ *Fire Department, 2005 Highlights*

- Completed a 10yr. Comprehensive Plan
 - Completed a new Fire Protection Program Plan
 - Completed a new Training Program Plan
 - Completed a new Employee Policy Manual
 - Nearing completion of an IGA with the City of Louisville
 - Implemented new programs to reduce EMS response time.
 - Maintained one of the lowest fire loss records of any front range community
-

Louisville Fire Department

□ ***2005- 2015 Comprehensive Plan***

- Provide a 10yr planning document for review by the stake holders and policy makers
 - Establish District policy direction and recommendations
 - Establish performance goals and standards
 - Summarize the potential costs of recommendations
-

Louisville Fire Department

□ *Fire Department,*

Comprehensive Planning Goals (Reasonable & Achievable)

- Limit one fire fatality per 25,000 population (per 20 year)
 - Limit firefighter injuries to two per year
 - Provide fire response within 8 mins. (90%)
 - Provide BLS response within 7 mins. (90%)
 - Provide ALS response within 8 mins. (90%)
 - Limit fire starts to 50 per 25,000 population per year
 - Maintain a high quality of life to the residents of the district.
 - Be a model customer service provided.
-

Louisville Fire Department

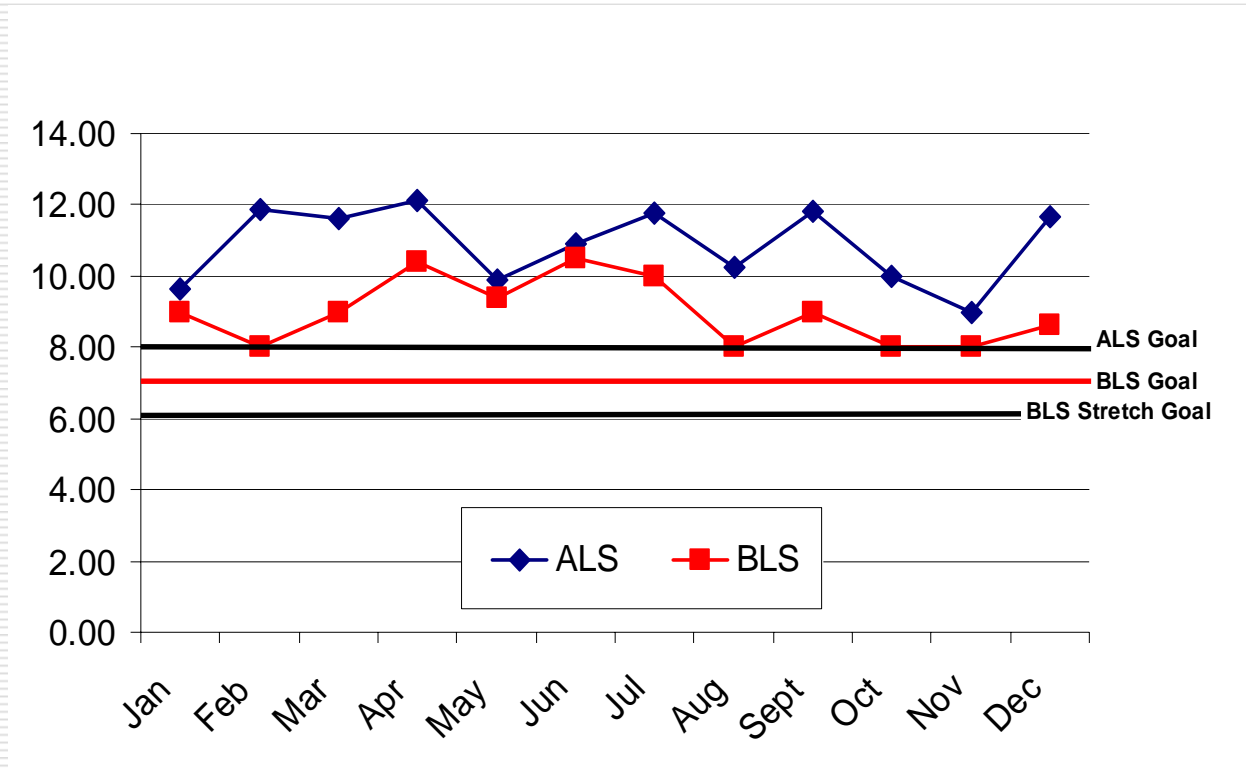
□ *Fire Department*

Comprehensive Planning (26-RECOMMENDATIONS)

1. Transition volunteers to “Duty Crew” staffing model (Implement reserve program)
 2. Formalize Mutual Aid agreements.
 3. Implement a “Combination” staffing strategy.
 - Hire 9 firefighters & paramedics. **(Improve response times)**
 - In-house “Advanced Life Support” capabilities.
 - Implement “IGA” with City of Lafayette. (*Share operational capability & fixed costs*)
-

Louisville Fire Department

□ *Fire Department, (Response Time performance versus Goals)*



Louisville Fire Department

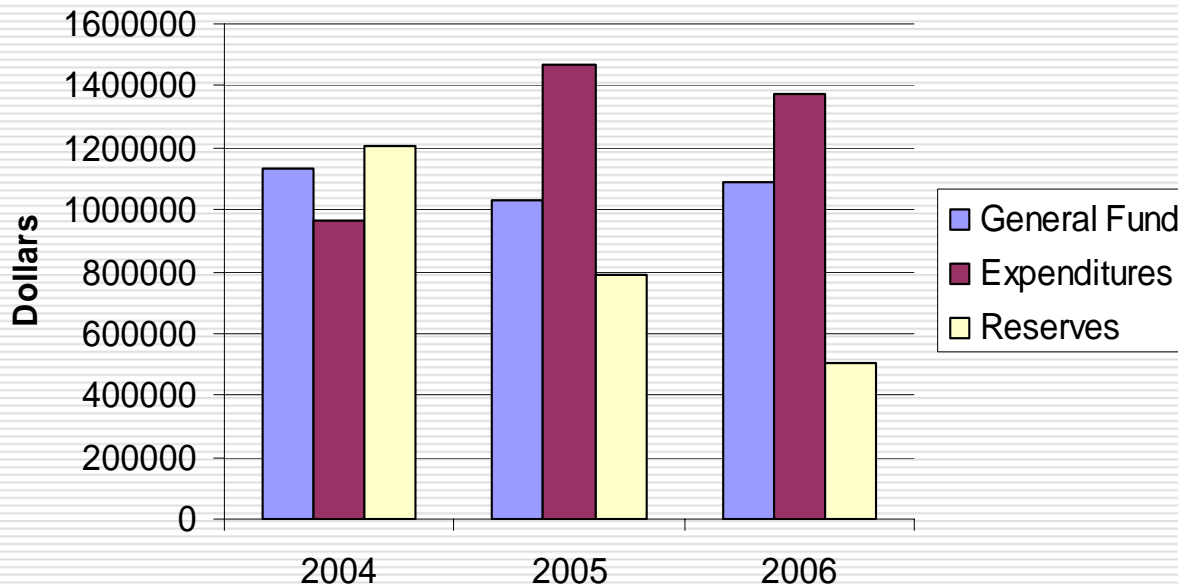
□ *Fire Department,* *Comprehensive Planning (26-RECOMMENDATIONS)*

4. Implement a fleet management replacement program
 5. Rebuild the “Downtown” station to meet operational needs and code requirements.
 6. Expand public education programs
 7. Seek the necessary funding to support programmatic needs and to maintain a high Quality of Life (provide the best service at the best value)
-

Louisville Fire Department

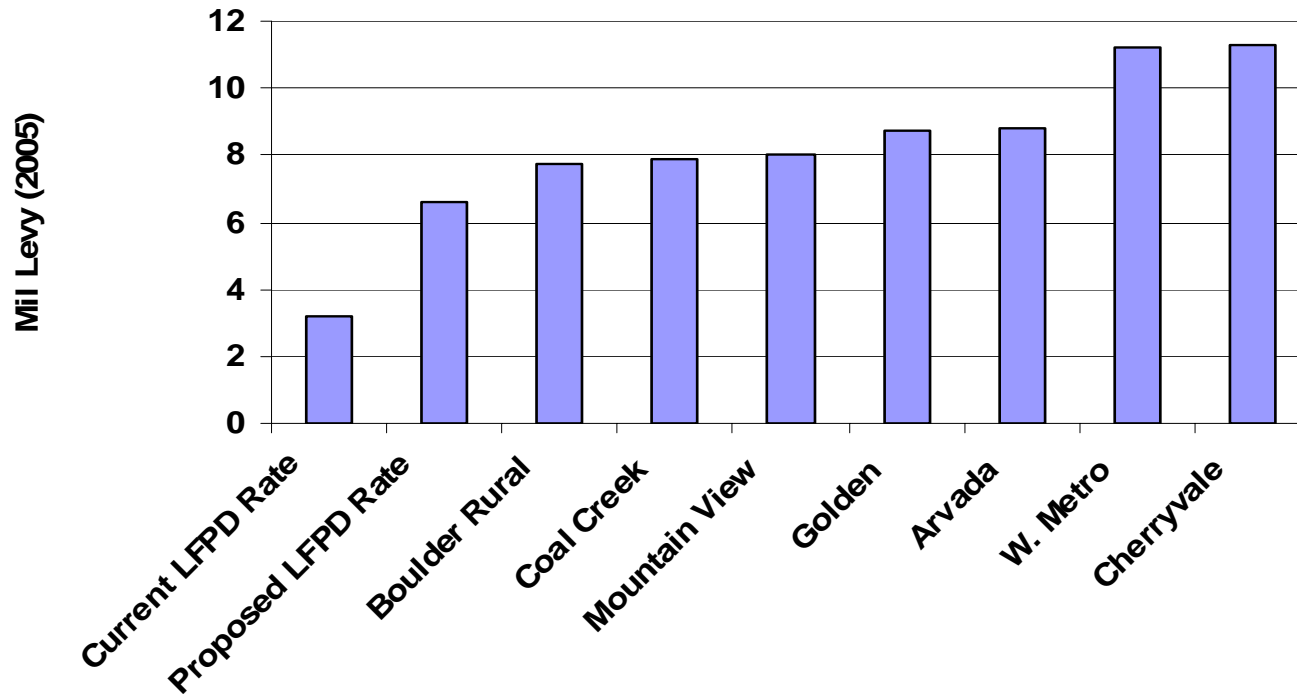
□ *Fire Department, (Expenditures)*

Louisville Fire Protection District



Louisville Fire Department

□ *Fire Department, (Mill Levy Comparison)*



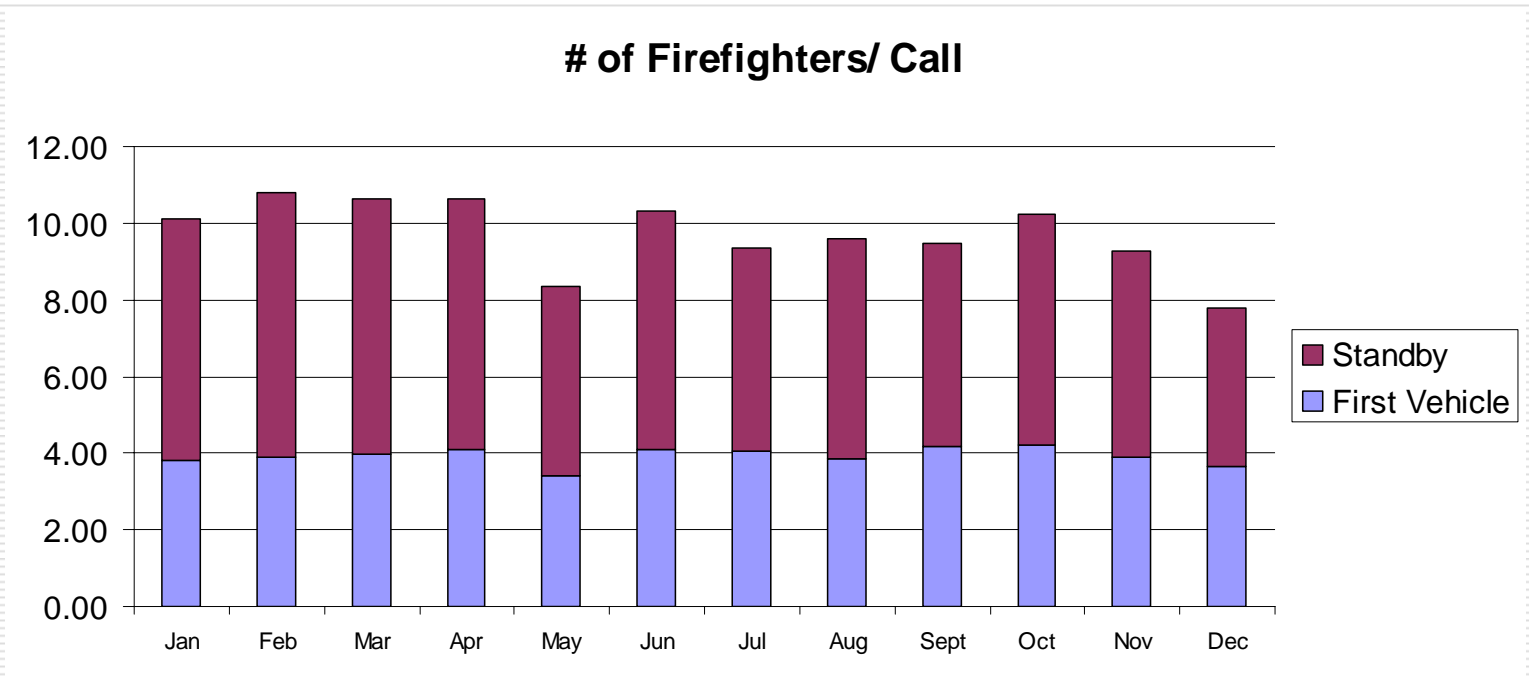
Louisville Fire Department

***Thank you for your
support***

"Our Family Serving your Family"

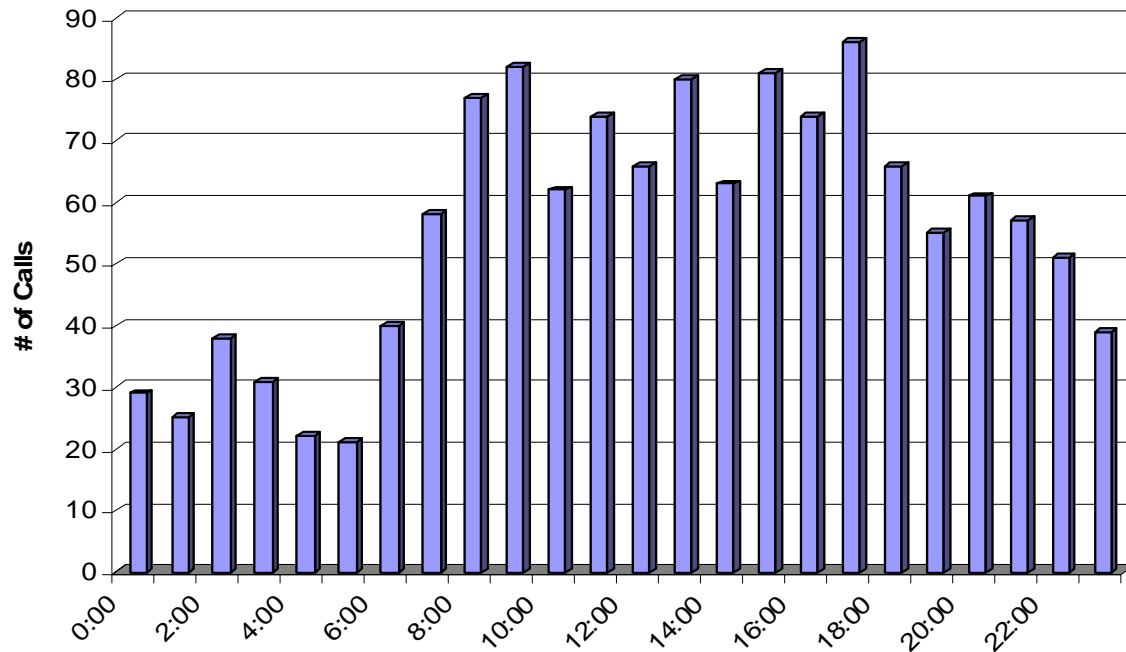
Louisville Fire Department

□ *Fire Department (Firefighters per call)*



Louisville Fire Department

□ *Fire Department (Demand times)*



Louisville Fire Department

